

TH212



SERIES	TH212
Number of way	5/6
Ø Hole	16 (M16 e PG9) - 20 (M20)
IP Protection	IP66 / IP67
Ambient temperature	-25°C / +60°C
IK Degree	IK08 (Ambient Temperature 25°C)



LID DETAIL

To proceed with opening of the lid, it is advisable to use a common flat-head screwdriver 3x0.5mm to facilitate its release. After upclipping one side of the TH212 box, proceed with the opposite one, Sganciato un lato della scatola, pulling the lid upwards.

Fig. 1



Fig. 2



Fig. 3

LACE ASSEMBLY

To ensure that the lid is not lost, Techno provide the TH212 Box with a lace and 2 tacks to be assembled as shown (Fig.3), thus facilitating wiring and maintenance of the product.

DRILLING SPECIFICATIONS

The mini-junction box TH212 has 4 in/out holes for M16 / PG9 threads and 1 in/out hole for M20 threads - 2 holes for M20 threads in the THA.212.AOA versions, supplied with pre-drilled lid. To proceed with hole opening on breakthrough wall, it will be necessary to use a slotted screwdriver and proceed according to the standard EN60670-1 e EN60670-22.



Fig. 4



Fig. 5



Fig. 6

N.B. : Techno indicates the hole opening methods and normative reference to proceed with the opening of breakthrough walls. It is the responsibility of the end user to comply with these regulations to avoid the product not functioning as stated.

It is the responsibility of the end user to verify the cleanliness of the hole to ensure IP protection and defined technical specifications.

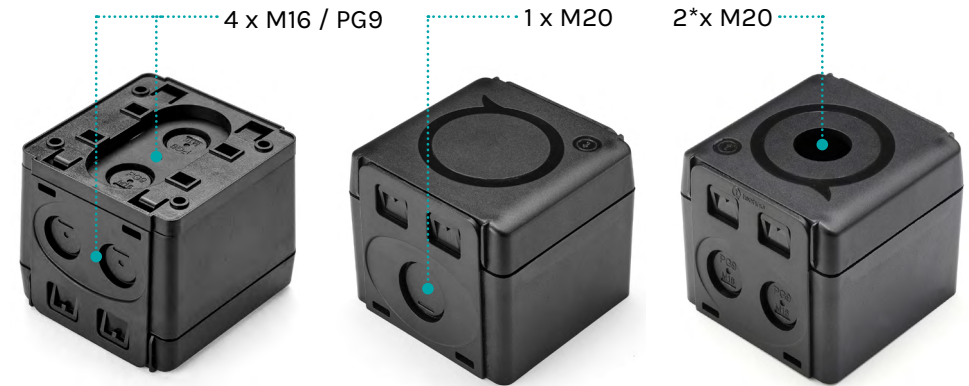
PRODUCT CONFIGURABILITY

The TH212 mini-junction box facilitates the housing of various **accessories**, which support the integration of different electronic components - such as PCBs, sensors, (third-party) drivers and common terminal block, making it a unique solution in the market and versatile in applications. The integration of drivers and sensors, make the mini-junction box adaptable to solutions for IoT applications - all while ensuring high mechanical strength IK08. The TH212 presents different configuration possibilities thanks to its 5 in/out ways - 6 in the case of the perforated lid configuration - which are highly customizable; in fact, it will be the end user who decides which holes to open: the TH212 box comes with all outputs closed.

CONFIGURATION EXEMPLES



COMPATIBLE TECHNO SERIES



For M16 holes, Techno's compatible series are as follows:



For M20 borings, Techno's compatible series are as follows (both standard and UP versions):



* **N.B.:** possibility of having 2 M20 ways only in the THA.212.B0A version

FIXING SPECIFICATIONS

The TH212 junction box has been designed to be versatile also in terms of the possibility of fixing it on different surfaces - also through the use of special accessories, in order to make it adaptable to multiple uses and applications..



PANEL MOUNTING WITHOUT BRACKET

Thanks to the special housings on the base of the TH212 box, it is possible to fix the box directly to the panel. To proceed with fixing, 4 screws Ø2.5mm will be required - for proper anchoring consider depth of the screw seat inside the box to be 10.5mm (see technical drawing for details).



Cod. 6000601YC

WALL OR PANEL MOUNTING WITH BRACKET

Through the use of the fixing bracket, it will be possible to anchor the TH212 box not only to the panel, but also to the wall. To proceed with the installation, the use of 4 Ø3mm pan head screws will be required. When the bracket is fastened to the identified surface, proceed to click the box onto the surface - audible on its proper attachment.

POLE MOUNTING WITH BRACKET AND WITHOUT BRACKET



Vertical Pole
Horizontal Connectors ✓

Vertical Pole
Horizontal Connectors ✗

HORIZONTAL POLE FIXING



Fig. 7

Thanks to the slots on the base of the box or on its fixing bracket, it is possible to pass through commonly used cable ties (UV resistant for Outdoor applications) of 7mm, thus fixing it to the horizontal pole (as shown in the figure).

To unlock the TH212 box from its mounting bracket, a slotted screwdriver can be used by inserting it into the appropriate slots on the base of the box.

N.B. : a maximum load of 4.0 kg is recommended for the configuration shown in figure 7..

TERMINAL BLOCKS ADAPTER



The terminal block adapter designed specifically for TH212, can be installed by the use of only a self-tapping M4 screw - 0.5 Nm. It is designed to accommodate Techno terminal blocks, but also to use third-party terminal blocks. The use of the accessory makes it possible to install the lid retaining strap, but compromises the use of the two M16 in/out ways on the base of the box. .

Cod. 6000640YC

M4 0.5Nm



ANNEX IO2H212



Techno s.r.l.

Via Bancora e Rimoldi, 27 - 22070 Guanzate (CO), Italia | Tel. +39 031 976445 | Fax. +39 031 976680
Customercare@techno.it | www.techno.it | www.ioth.it

Any changes to the document may be made without prior notice. Contact our Customer Service Department or visit www.techno.it for the latest updates.

GRID FOR TERMINAL BLOCKS AND DRIVERS

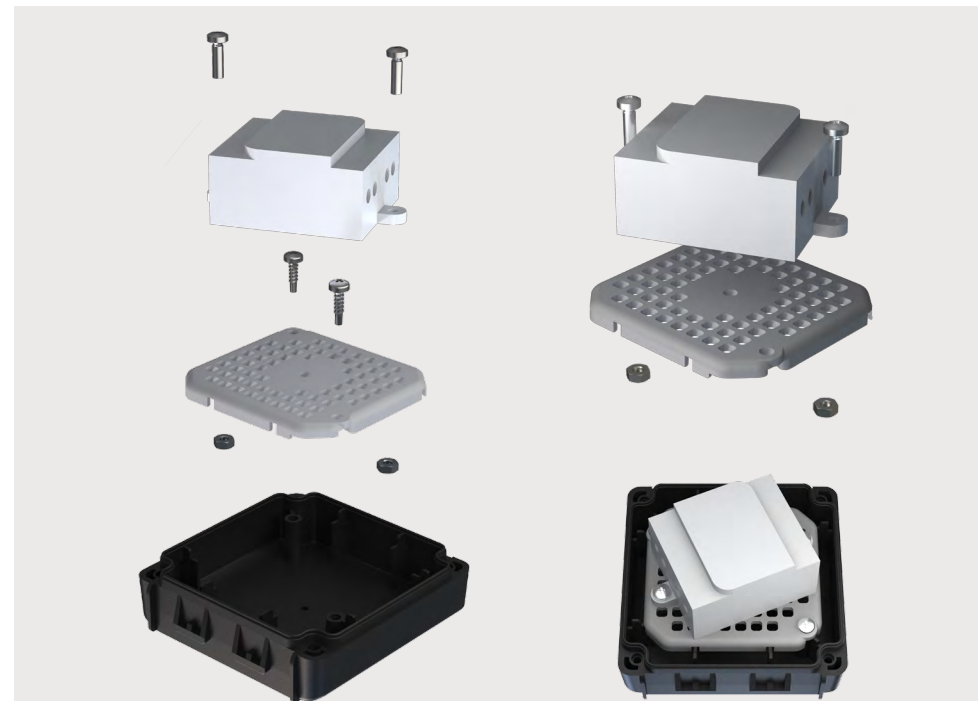
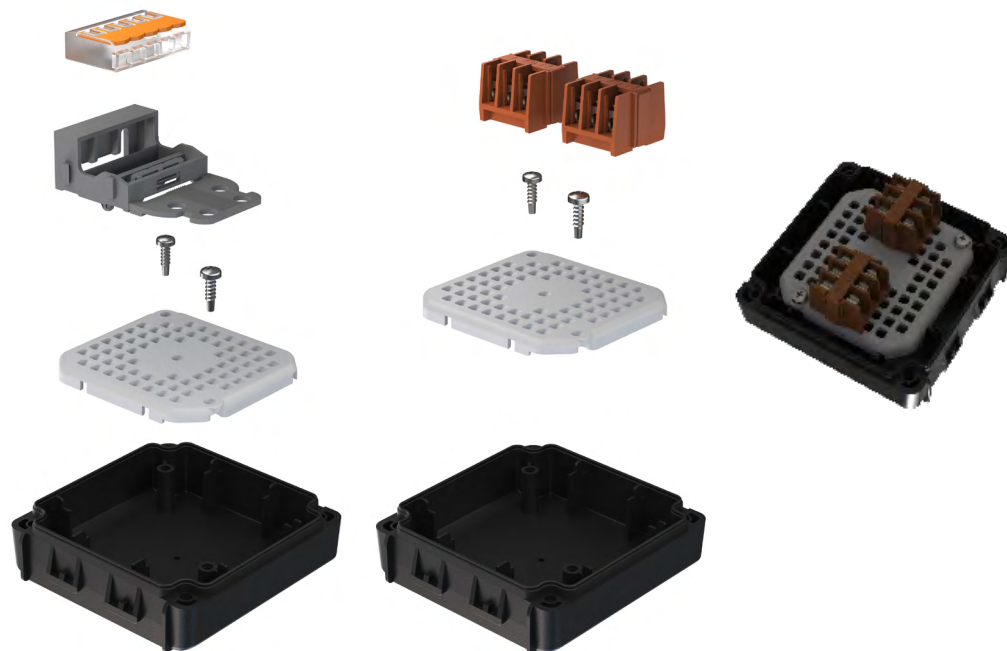


The grid designed to fit the cover of the TH212 Mini-Box, can be installed by just using two M4 self-tapping screws - 0.5 Nm. Thanks to its configuration, it is possible to ensure the attachment of Techno terminal blocks as well as third-party terminal blocks. In addition, the accessory is also designed to install drivers of various types. The use of the accessory makes it possible to install the lid fixing strap, but compromises the use of the possible M20 outlet on lid.



Cod. 6000638YC

M4 0.5Nm



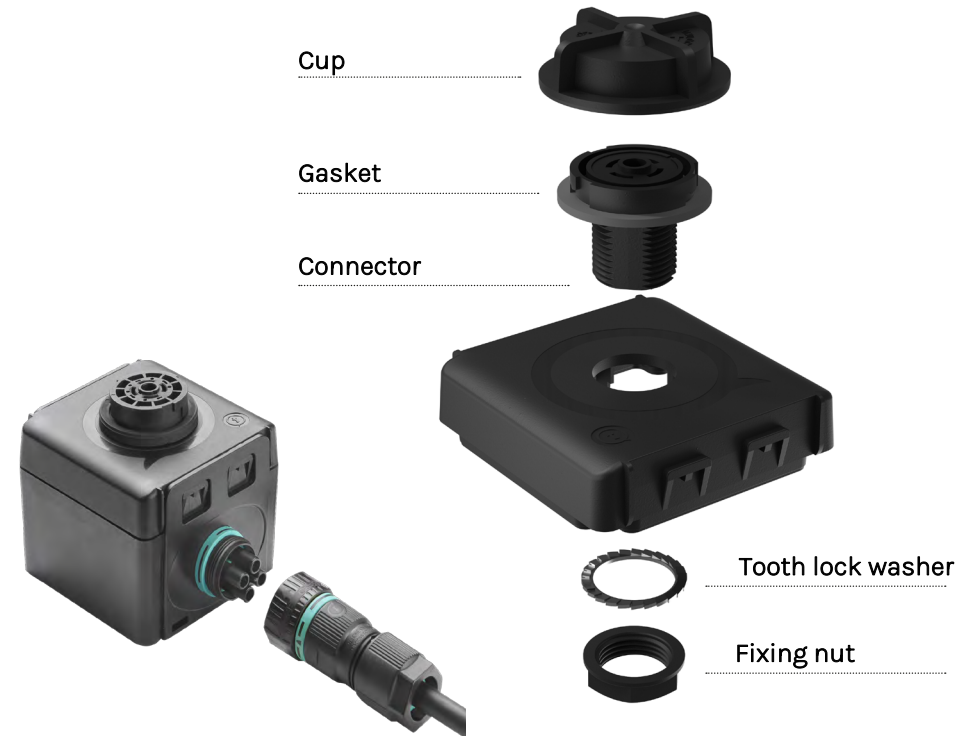
Integration with major market standards, allows the box to be used for high-performance solutions that enable communication between various devices capable of intelligent light management, making the Mini TH212 suitable for IoT solutions.

N.B.: for fixing the Driver modules, it is recommended to use M3 x 8mm screws with self-locking lock nut - so as to ensure the safety of the module fixing..

IoTH PRODUCT CONFIGUABILITY

The TH212's configuration also allows for cover-mounted installation of PCBs or sensors-purchasable from third parties, which can be seamlessly integrated with Techno connectors. The integration of electronic control and light monitoring components in architectural and/or urban installations is increasingly in demand. Techno enters the IoT world with its first IoTH product, presenting features of versatility, compactness and high configurability, lending itself to be the perfect solution for new smart applications.

ANNEX IOETH212



Techno, a member of the Zhaga Alliance, offers solutions capable of making the interoperability of sensors and communication nodes to LED lighting fixtures easier by installing the standard Zhaga Book 18 receptacle. Plug&Play installation reduces the complexity of mounting, providing an advantage to the installer. This configuration, makes it possible to use the total 6 outputs of the box. For installation details check Product Instruction Sheet: IOTH.212.Z000 <https://www.techno.it/mini-scatola-di-derivazione-ioth-6-vie-m16m20-zhaga-book-18>